



Cephass Street, London, E1

BUTLER & STAG



Nestled on the fringe of the historic St. Peters Conservation area, this three-bedroom freehold house offers a unique opportunity for modernization. Spread across three levels, this property combines versatile living accommodation with the potential for contemporary refurbishment.



Freehold

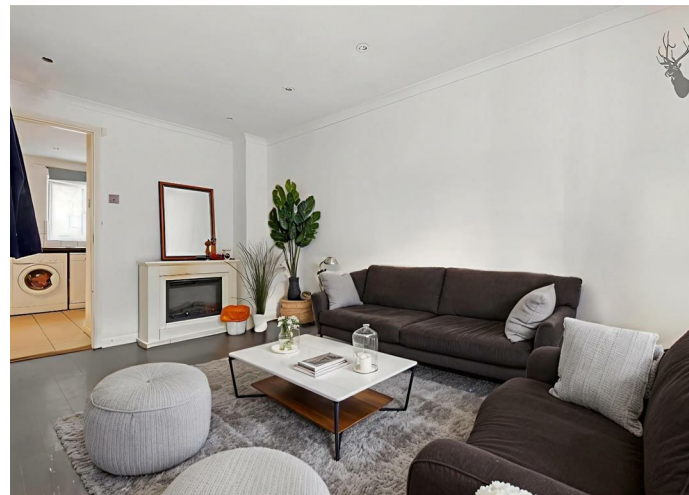
- Freehold House
- Two Bathrooms
- Three Bedrooms
- Arranged Over Three Levels - Providing Versatile Living Accommodation
- Private South Facing Garden
- Potential For Contemporary Refurbishment

The ground floor welcomes you with a kitchen/breakfast room and spacious reception area, with French doors leading to a south facing garden. Moving upstairs, the first floor reveals generous accommodation possibilities with two well-proportioned bedrooms and a family sized bathroom.

Ascending to the top floor, this area presents an opportunity to create a bespoke living space or principal bedroom benefitting from a en-suite bathroom arrangement.

Outside, the property benefits from its location which is on the fringe of the St. Peters Conservation area, renowned for its leafy streets and historical charm. Residents enjoy proximity to local amenities, green spaces, and convenient transport links, making it an ideal location for both relaxation and accessibility.

Offering a canvas for renovation and customization, this freehold house presents an exciting prospect for those seeking to create a distinctive home in a desirable location. Whether as a family residence or an investment opportunity, this property embodies the allure of urban living with the promise of personalization.





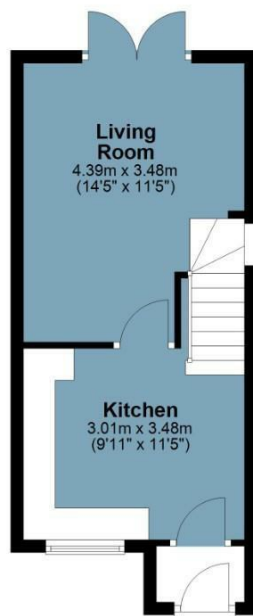
Cephas Street

Approx. Gross Internal Area 71.1 Sq M (764.9 Sq Ft)

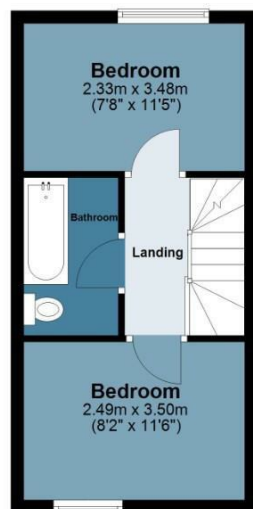
BUTLER & STAG



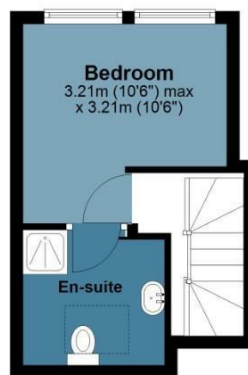
Ground Floor
Approx. 27.2 sq. metres (292.7 sq. feet)



First Floor
Approx. 26.2 sq. metres (281.8 sq. feet)



Second Floor
Approx. 17.7 sq. metres (190.5 sq. feet)



Measurements are approximate and for illustration purposes only. While we do not doubt the accuracy and completeness, we advise you conduct a careful independent assessment of the property to determine monetary value.
© @modephotouk www.modephoto.co.uk

IMPORTANT NOTICE - These particulars have been prepared in good faith and they are not intended to constitute part of an offer or contract. We have not performed a structural survey on this property and the services, appliances and specific fittings have not been tested. All photographs, measurements, floor plans and distances referred to are given as a guide and should not be relied upon.

BUTLER & STAG

☎ 020 8102 1236

🏠 508 Roman Road, Bow, London, E3 5LU

✉ bow@butlerandstag.com

www.butlerandstag.uk